

**ITEM 25. PARKING – ANGLE PARKING – FORBES STREET NEWTOWN**

**TRIM RECORD NO: 2017/494843**

**RECOMMENDATION**

It is recommended that the Committee endorse the following traffic treatments and parking changes on the western side of Forbes Street, Newtown:

- (A) Reallocation of parking between the points 10.5 metres and 46.6 metres (12 car spaces) north of Wilson Street, as “60° Angle Parking, Rear to Kerb, Vehicles Under 6m Only”,
- (B) Reallocation of parking between the points 46.6 metres and 106.9 metres (20 car spaces) north of Wilson Street, as “2P 8am-6pm, Mon-Fri, Permit Holders Excepted Area 22” with “60° Angle Parking, Rear to Kerb, Vehicles Under 6m Only”, and
- (C) Installation of two 4.6 metre wide kerb side islands between the points 0 metres and 10.5 metres and between the points 106.9 metres and 112.9 metres, north of Wilson Street.

**VOTING MEMBERS FOR THIS ITEM**

<b><i>Voting Members</i></b>	<b><i>Support</i></b>	<b><i>Object</i></b>
City of Sydney		
Roads and Maritime Services		
NSW Police – Newtown LAC		
Representative for the Member for Newtown		

**DECISION**

**BACKGROUND**

The Newtown, Darlington, Erskineville and Camperdown Pedestrian, Cycling and Traffic Calming (PCTC) Plan adopted by Council in 2010 includes a proposal to install a separated cycleway on Wilson and Burren Streets, Newtown, between Ivy Street and Leamington Lane.

To mitigate the concerns about the loss of parking as a result of the cycleway, residents of Forbes Street, Newtown have requested the consideration of 60° angle parking, rear to kerb, on the western side of the street.

**COMMENTS**

The kerb space on the western side of Forbes Street, Newtown between Wilson Street and Elvy Place, is currently parallel parking and either signposted as “2P 8am-6pm, Mon-Fri, Permit Holders Excepted Area 22” or is unrestricted for parking.

The installation of 60° angle parking, rear to kerb, in Forbes Street would provide 13 new parking spaces. This would partly mitigate some of the loss to parking resulting from the Wilson and Burren Streets cycleway. Additional parking is also to be provided in other streets surrounding the cycleway resulting in a net gain of 10 parking spaces for the cycleway project.

The proposed changes would require all vehicles to park at a 60° angle, rear to kerb, where the signs are installed. The proposal will retain some kerbspace as unrestricted angle parking and some 2P angle parking because this benefits visitors to the area and residents who aren't eligible for parking permits.

## **CONSULTATION**

During consultation on the proposed cycleway in Wilson and Burren Streets, concerns were raised in relation to parking loss. The City then consulted on an amended proposal for 60° angle parking, rear to kerb, in Forbes Street as well as parking proposals for other streets surrounding the cycleway. There were 4,000 letters sent out with seven responses supporting and seven responses opposing the proposal.

Submissions supporting the proposal noted that the changes would provide more parking availability in the area.

Submissions opposing the proposal noted that the changes would attract more traffic to the area.

Given that the proposed parking changes offset the loss of parking resulting from the proposed cycleway on Wilson and Burren Streets, the City proposes to proceed with the proposal.

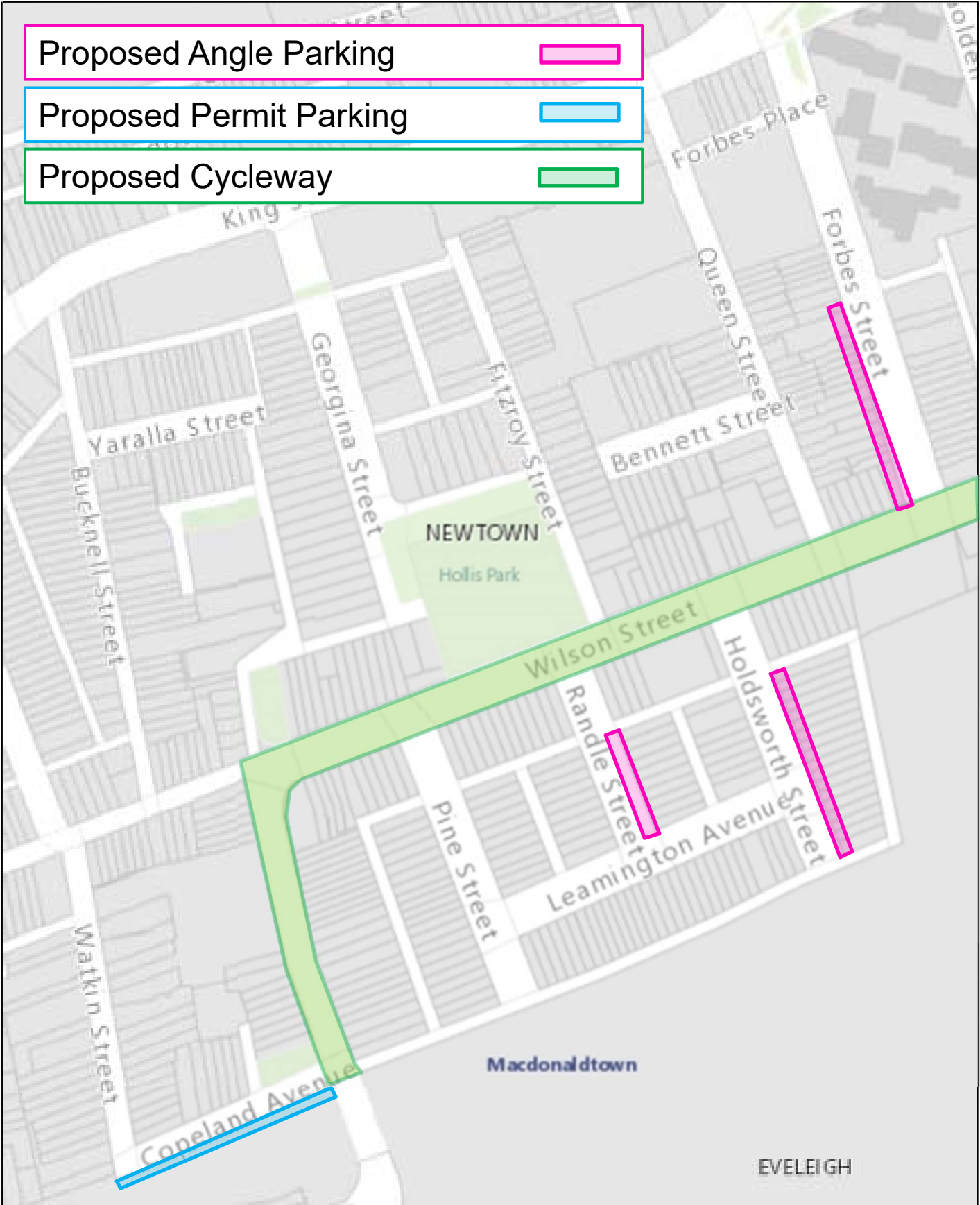
## **FINANCIAL**

Funds are available in the City Projects Capital Works Budget.

Parking – Angle Parking – Forbes Street Newtown

Kerry Gallagher Project Manager

- Proposed Angle Parking
- Proposed Permit Parking
- Proposed Cycleway



LOCATION PLAN

PARKING CHANGE LOCATION MAP

NEWTOWN



**Comments**

- Proposed 60 degree angle parking on western side between Wilson Street and Elvy Place are indicative only and based on existing surrounding parking arrangements.
- Approximately 16 parking spaces gained along all of Forbes Street.
- Existing parallel parking on eastern side will not change.
- Proposed kerb blisters are indicative only and are subject to further design.

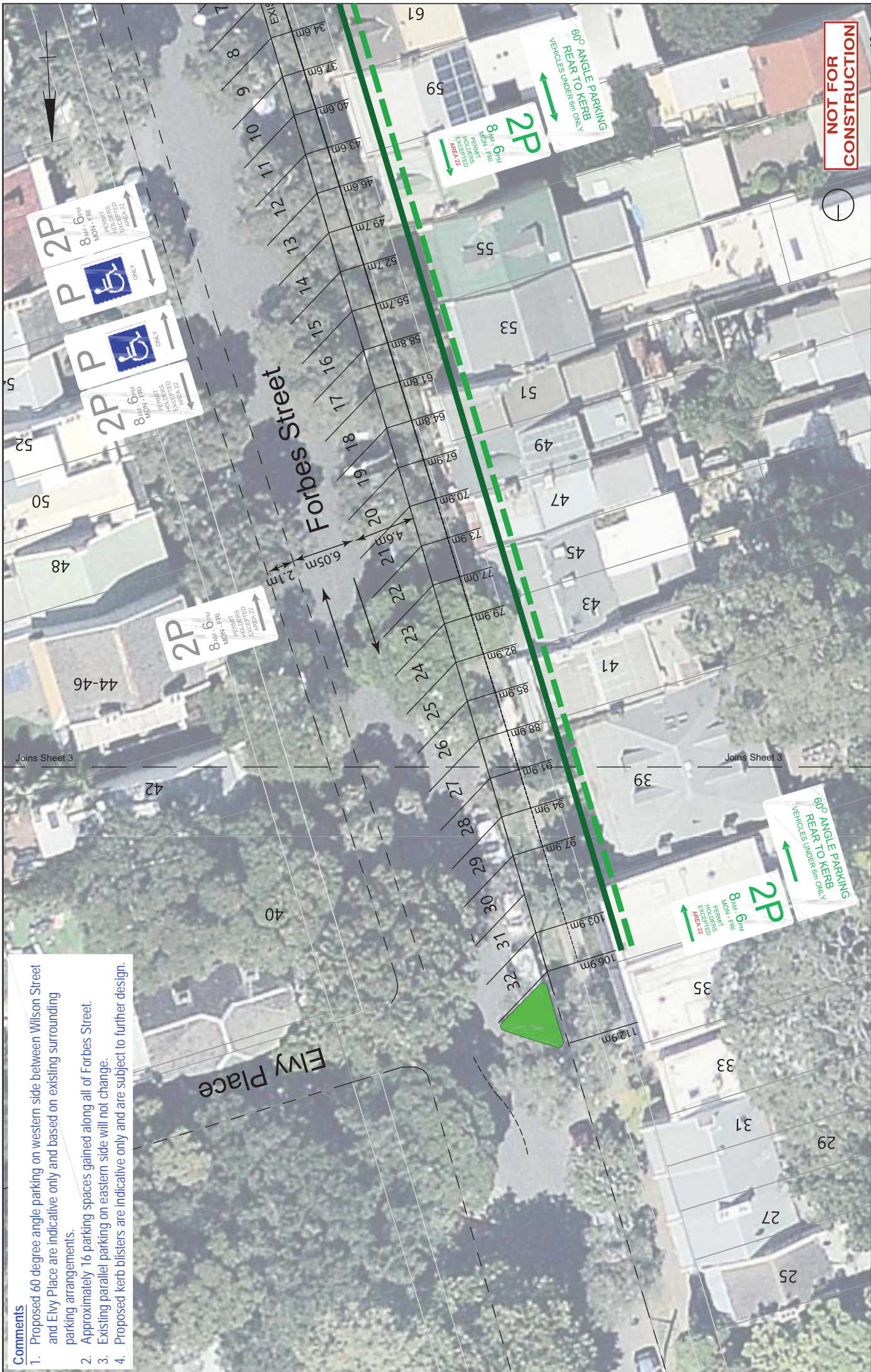


**NOT FOR CONSTRUCTION**

Date:	12/09/17
Drawing Name:	<b>PROPOSAL 60° ANGLE PARKING FORBES STREET, NEWTOWN</b>
Version:	C
Sheet:	3
Scale @ A3:	1:250
Legend:	<ul style="list-style-type: none"> <li>No stopping (existing)</li> <li>Unrestricted parking - parallel (existing)</li> <li>2P 8am-6pm Mon-Fri Permit Holders Excepted Area 22 parallel parking (existing)</li> <li>Unrestricted 60° angle parking rear to kerb (proposed)</li> <li>2P 8am-6pm Mon-Fri Permit Holders Excepted Area 22 60° angle parking rear to kerb (proposed)</li> </ul>

**Comments**

1. Proposed 60 degree angle parking on western side between Wilson Street and Eivy Place are indicative only and based on existing surrounding parking arrangements.
2. Approximately 16 parking spaces gained along all of Forbes Street.
3. Existing parallel parking on eastern side will not change.
4. Proposed kerb blisters are indicative only and are subject to further design.



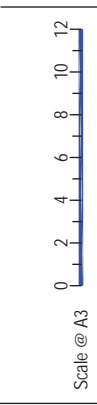
**NOT FOR CONSTRUCTION**



Date:  
12/09/17

Drawing Name:  
**PROPOSAL 60° ANGLE PARKING  
FORBES STREET, NEWTOWN**

- 2P 8am-6pm Mon-Fri  
Permit Holders Excepted Area 22  
60° angle parking rear to kerb  
**(proposed)**
- 2P 8am-6pm Mon-Fri  
Permit Holders Excepted Area 22  
parallel parking  
**(existing)**



Sheet 4  
Version C

